

ONE·TOUCH™

www.ONETOUCHPRODUCTS.com



# AUTOMATIC DUAL SALT & PEPPER MILL

\* PLEASE READ AND SAVE  
THESE USE AND  
CARE INSTRUCTIONS

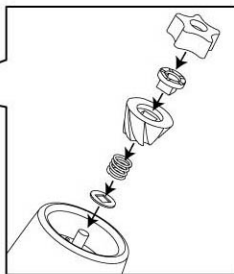
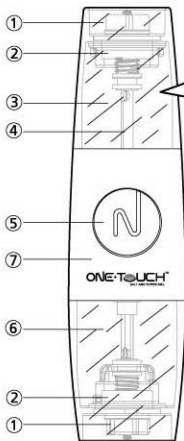
USER MANUAL

Model no.: SP17

## IMPORTANT SAFETY INSTRUCTIONS

- Read all instructions carefully before using your Salt & Pepper Mill.
- This mill is not a toy. Please keep out of the reach of children.
- Make sure the motor has come to a complete stop before taking off the clear chamber for salt / pepper refill or battery replacement.
- During battery replacement, DO NOT press the switch.
- Always replace all batteries at once and never mix old and new batteries or batteries of different types.
- To maintain your Salt & Pepper Mill at its optimal condition, DO NOT expose any parts of the mill to moisture or water.
- NOT suitable for dishwasher.

## Parts

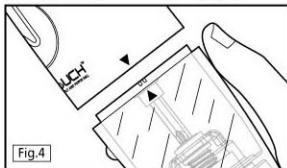
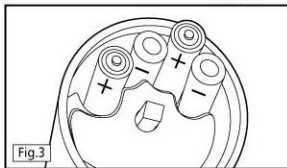
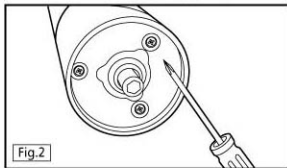


1. Adjustable Knob
2. Ceramic Grinder
3. Upper Clear Chamber
4. Shaft
5. Start Button
6. Bottom Clear Chamber
7. Battery Housing

## Getting Started

### **BATTERY INSTALLATION**

1. Grasp the bottom clear chamber and twist it clockwise to unlock. (Fig.1)
2. Remove the chamber from the Battery Housing.
3. Unfasten the 3 screws and pull out the battery door. (Fig.2)
4. Turn the Mill upside down to let the batteries slide out.
5. Install 4 AAA alkaline or rechargeable batteries into the battery compartment according to polarity (+/-) instruction. (Fig.3)
6. Replace the battery door and replace the screws.
7. To replace the Clear Chamber, align the marks, fit the chamber and twist anti-clockwise to lock.



### **FILLING WITH SALT / PEPPER**

1. Grasp the Upper (Bottom) Clear Chamber and twist it anti-clockwise (clockwise) to unlock. The Clear Chamber can now be pulled away from the Battery Housing.
2. The Clear Chamber will come loose from the base of the Salt & Pepper Mill.
3. Fill the Clear Chamber approximately 80% full with salt rocks / peppercorns.
4. Align the marks (Fig.4) and slide the Clear Chamber into the Battery Housing. Twist to lock.

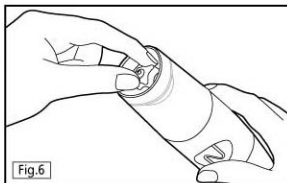
## OPERATING THE MILL

With either the Salt or Pepper mill facing downwards, simply press and hold the button. (Fig.5)



## ADJUSTING THE GRINDING MECHANISM

Simply turn the knob at the end of the Clear Chamber to adjust for the setting you prefer. The tighter the knob gets, the finer the salt/pepper. (Fig.6)



## **Cleaning and Care**

Use a clean, dry cloth to clean the mill. Never submerge the mill into water or wash under running water.

## **Specification**

Dimension: 200 x 54 x 54 mm

Battery: 4 x AAA alkaline or rechargeable batteries.

### **Disposal**

The packaging material can be recycled. Please dispose of it in an environmentally friendly manner and take it to a recycling centre.



If you wish to dispose of this equipment at any point, please also do so in an environmentally friendly manner. It should not be disposed of alongside general household waste. Instead, please take it to recycling point for electrical goods. Your local council will be able to advise you further.

Batteries should not be thrown away in household waste. Please ensure that you always dispose of batteries and rechargeable batteries only when they are empty. Your local council will be able to advise you further.