

ONE·TOUCH™

www.ONETOUCHPRODUCTS.com

# AUTOMATIC CAN OPENER II

(The Special Edition)



**USER MANUAL**

Model no.: KC26

## CAUTION

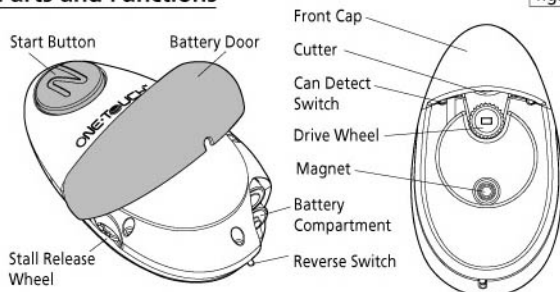
- Read all instructions carefully before using your Can Opener II.
- Close supervision is necessary when your Can Opener II is used by or near children.
- **DO NOT** open pressurized (aerosol-type) cans.
- **DO NOT** open cans of flammable liquids such as lighter fluids.
- Make sure the motor has stopped completely before lifting up the Battery Door for battery replacement.
- Avoid contact with moving parts. Keep hands, hair, jewelry, clothing etc away from moving parts during operation to prevent injury, and/or damage to the Can Opener II.
- To maintain your Can Opener II at its optimal condition, **DO NOT** immerse it in water or any other liquids.
- **DO NOT** try to adjust or remove the cutter screw.
- **NOT** suitable for dish washer.

## SAVE THESE INSTRUCTIONS

This Can Opener II is intended for household use only.  
Read the following instructions before using for the first time.

## Parts and Functions

fig.1



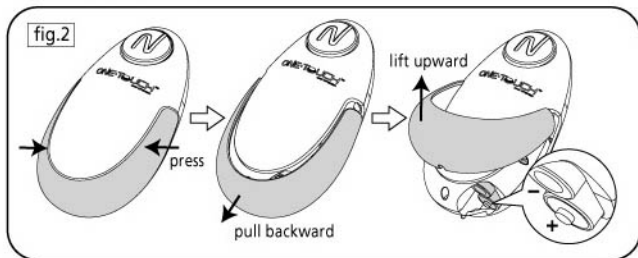
## Getting Started

### BATTERY INSTALLATION

Exert slight pressure on both sides of the Battery Door, pull backward and then lift upward (see fig.2). Remove and install 2 AA alkaline or rechargeable batteries into the battery compartment according to the polarity (+/-) instruction. Replace the Battery Door after the batteries have been installed (see fig.2). Always replace both batteries at once and never mix old and new batteries or batteries of different types.

#### NOTE:

The cutter will not operate when either the Battery Door or Front Cap is removed from the unit.



## USING THE "ONE TOUCH" Can Opener II

1. Place your Can Opener II on top of the can with its rim positioned in the groove at the bottom of the Can Opener II (see fig.3).

**NOTE:**

The cutter will not operate unless it is positioned correctly on the rim of the can.

To open the cans with tab, turn them upside-down, so that the Can Opener II can work on the lid without tab.

2. With the can on a flat surface, press the Start button for about one second and release it once the Can Opener II starts to cut the can (see fig.4). After cutting, the Can Opener II will stop automatically. (see fig.5)

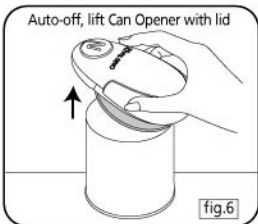
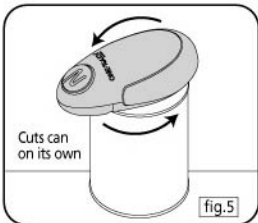
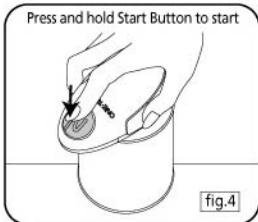
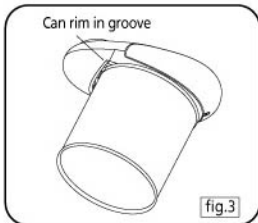
**NOTE:**

The maximum can size that can be fully cut in one cycle is 98mm (3.85") diameter. If you need to completely remove the lid of a bigger can, press the Start Button again and the Can Opener II will resume cutting and stop automatically after cutting.

3. When the cutting is completed, lift the Can Opener II off the can. A magnet on the Can Opener II will pick up the lid for your convenience (see fig.6).

**NOTE:**

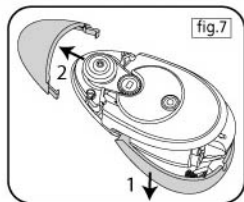
There is functional sharp edge on the round cutter, and should be treated with care.



## Care and Maintenance

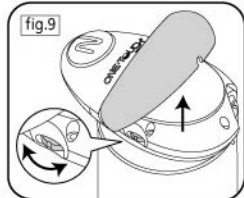
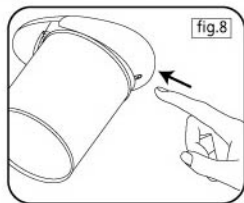
1. If the Can Opener II slows during cutting, this may indicate low battery level and the batteries should be replaced. If the Can Opener II stops during operation, see "*Trouble Shooting*" below.
2. To clean the cutter, first lift up the Battery Door, then remove the Front Cap (Fig.7). Wipe the cutter with a damp cloth or a sponge, using a mild non-abrasive cleaner, followed with a clean, dry cloth to dry it completely. Replace the Front Cap and the Battery Door after the cleaning.

**NOTE:** The Front Cap cannot be removed without lifting up the Battery Door as they are interlocked.



## Trouble Shooting

1. If the Can Opener II is jammed due to low battery level or a deformed can rim, press and hold the Reverse Switch at the rear of the Can Opener II. The Can Opener II will move in the reverse direction and release the can. Keep the Reverse Switch depressed until the Can Opener II stops (see fig.8).
2. If batteries are depleted the Can Opener II may not be released by pressing the Reverse Switch. In this case, replace with a new set of batteries. The Can Opener II will automatically start again when the Battery Door is in position again. OR if you do not have new batteries on hand, lift up the Battery Door, slowly turn the Stall Release Wheel forward until the can is released OR backward to complete the cut (see fig.9).



**NOTE:**

After replacing the batteries following use of the Stall Release Wheel, press and hold the Reverse Switch and Can Detect Switch (see fig.1) together until the Can Opener II resets to its start position. Keep your fingers away from the Cutter and Drive Wheel to prevent injury.

3. Cans with heavy seams, odd shapes, or uneven rims may stall the Can Opener II. If this happens, follow above procedure to release the can. Start the cutting action just beyond any minor bump or dent in a can.

**NOTE:**

The Can Opener II will not open rimless cans or cans with odd corners.

## Technical Specifications

**Operate voltage:** DC2.4-3V

**Battery:** 2 x AA alkaline or rechargeable batteries

**Maximum can cutting size in one cycle:** diameter 98mm (3.85")  
(preferred)

**Disposal**

The packaging material can be recycled. Please dispose of it in an Environmentally friendly manner and take it to a recycling centre.



If you wish to dispose of this equipment at any point, please do so in an environmentally friendly manner. It should not be disposed of alongside general household waste. Instead, please take it to recycling point for electrical goods. Your local authority will be able to advise you further.

Batteries should not be thrown away in household waste. Please ensure that you always dispose of batteries and rechargeable batteries only when they are empty. Your local authority will be able to advise you further.